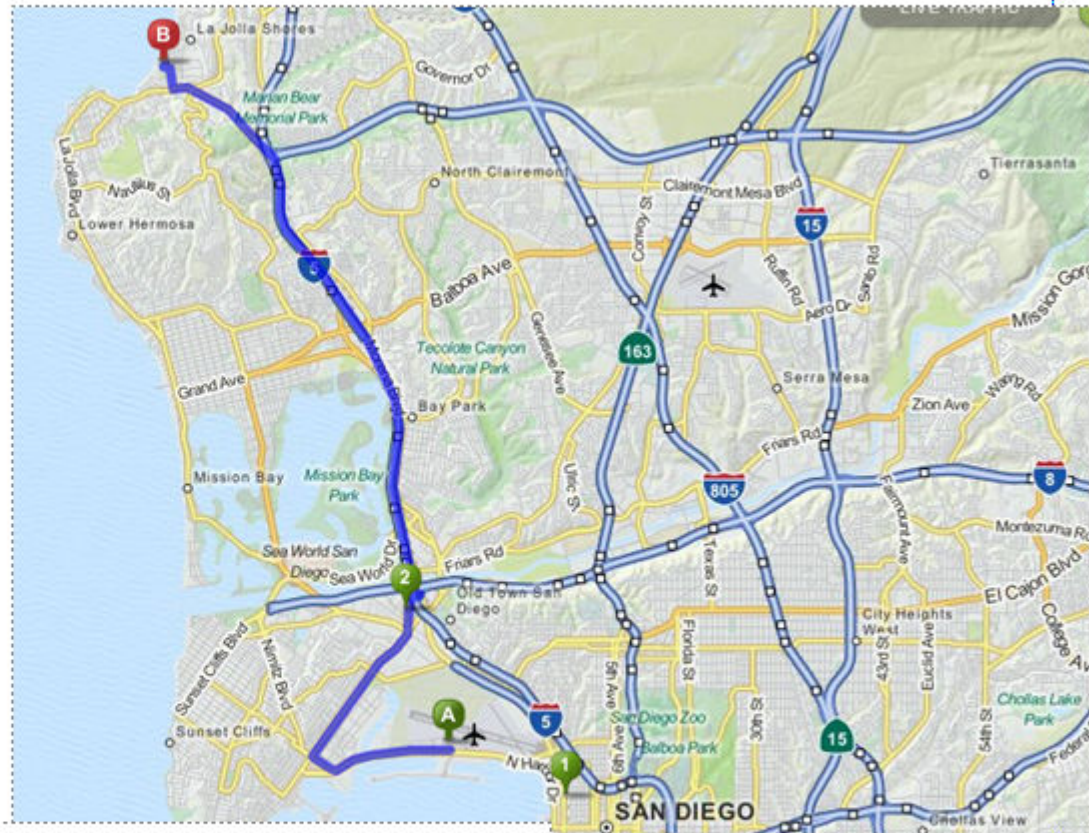


Directions from the San Diego Airport to La Jolla Shores Hotel

San Diego Airport: 3225 N Harbor Dr, San Diego, CA 92101

La Jolla Shores Hotel: 8110 Camino Del Oro, La Jolla, CA 92037-3108

1. Start out going west on N Harbor Dr toward McCain Rd. 1.5 mi
2. Turn right onto Nimitz Blvd. 0.4 mi
Nimitz Blvd is 0.1 miles past Laning Rd
3. Turn right onto Rosecrans St/CA-209 N. Continue to follow CA-209 N. 2.3 mi
CA-209 N is just past Scott St
If you reach Locust St you've gone a little too far
4. CA-209 N becomes Camino del Rio W. 0.1 mi
5. Merge onto I-5 N toward Los Angeles. 5.9 mi
6. Take the La Jolla Pkwy West exit, EXIT 26A. 0.6 mi
7. Merge onto La Jolla Pky. 1.2 mi
8. Stay straight to go onto Torrey Pines Rd. 0.2 mi
9. Turn right onto Calle de La Plata. 0.3 mi
Calle de La Plata is 0.1 miles past La Jolla Shores Dr
If you reach E Roseland Dr you've gone a little too far
10. Turn left onto Avenida de la Playa. 0.09 mi
Jeff's Burgers is on the corner



11. Take the 2nd right onto Camino del Oro. 0.04 mi
Camino del Oro is just past Camino del Sol
If you reach the end of Avenida de la Playa you've gone a little too far

12. 8110 CAMINO DEL ORO is on the left.
If you reach Vallecitos you've gone a little too far

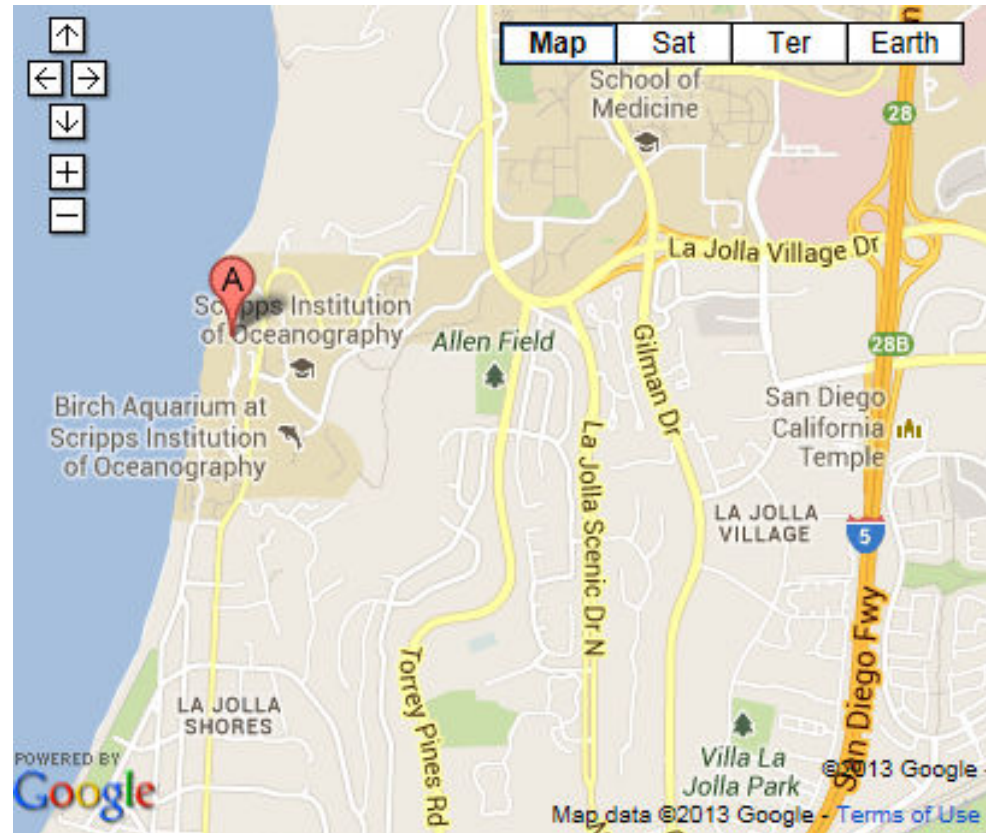
Directions if you are traveling from the CERF conference or from the airport to the meeting location on Day 1 (Nov. 7) at Scripps - Martin Johnson House (T29)

This may help if your taxi isn't familiar with Scripps.

Driving Directions

From Hwy 5 North

- Head west on La Jolla Village Drive.
- Turn left onto La Jolla Shores Drive.
- Wind down La Jolla Shores Drive.
- Turn right at Naga Way (Sharp turn! Look for Scripps sign.)
- When the road forks, take to the right.
- Drive up the road until you come to three small white cottages on the left. Look for Martin Johnson House or T29.



In order to help inform you about transportation logistics while at Scripps

Parking at Scripps Institution of Oceanography (SIO) can be problematic at best, so we have come up with some alternatives...

On November 6 or 7 -

If you aren't going to have a car you can either taxi from the airport or the [CERF conference](#) directly to the hotel or to our meeting. The San Diego Airport and Town & Country hotel (for our CERF attendees) are about 20 minutes away.

Once you are at the hotel you have a couple options of travel to SIO.

- Either walk along the beach (Slide 4 – you should budget about 30 minutes for this beautiful walk).
- Nov. 7 we are meeting at Martin Johnson house at 7:30 am.
- On Nov. 8 we are starting the day with a pier tour at 7:30 am.
- Not walking? Take the shuttle from the hotel to our meetings on campus. The shuttle will depart from La Jolla Shores Hotel at 7:00 & 7:15 am on November 7 and 8.
- We will also arrange shuttles for those that are getting to La Jolla at different times.

If you have to drive to Scripps it would be best to park at the hotel and join us on the shuttles. Parking at La Jolla Shores hotel is \$18/day

We will either walk/shuttle/car pool to various locations around the SIO Campus to ensure that you will not need a vehicle while here.

Directions from La Jolla Shores Hotel to Piatti's for Wednesday evening dinner. Reservations are at 6:15 pm. We will either meet you there or you can meet up at the front desk and we can all walk over together at 6:00 pm

Hotel: 8110 Camino Del Oro, La Jolla, CA 92037
Piatti's: 2182 Avenida de la Playa, La Jolla, CA 92037

Note:

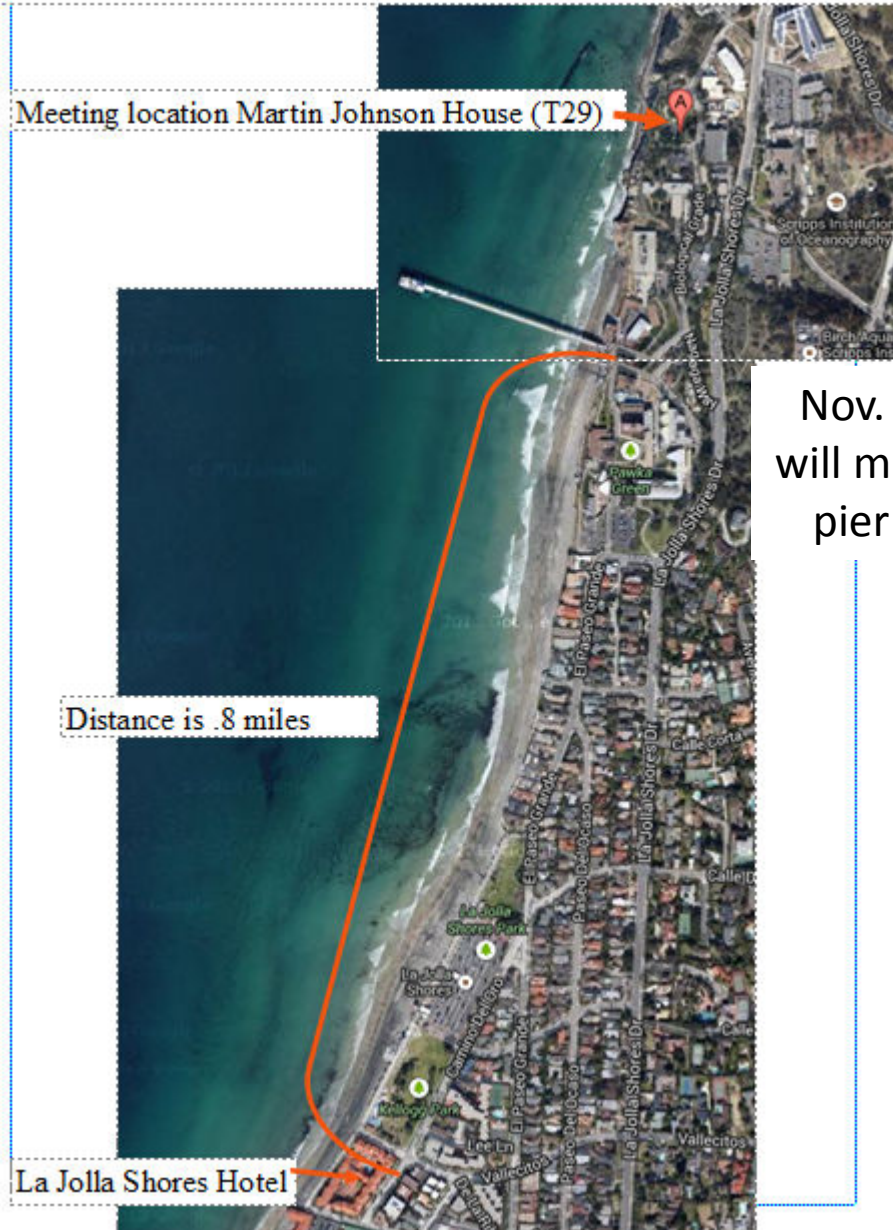
The area outlined in the yellow box is where you will find convenience stores, coffee shops, and restaurants.



Optional Dinner on November 6th

Walking directions from hotel to meeting location
Part 1

Nov. 7 (day 1) we
will be meeting at
the Martin Johnson
house (T29)
at 7:30 am



Nov. 8 (day 2) we
will meet at the SIO
pier at 7:30 am.

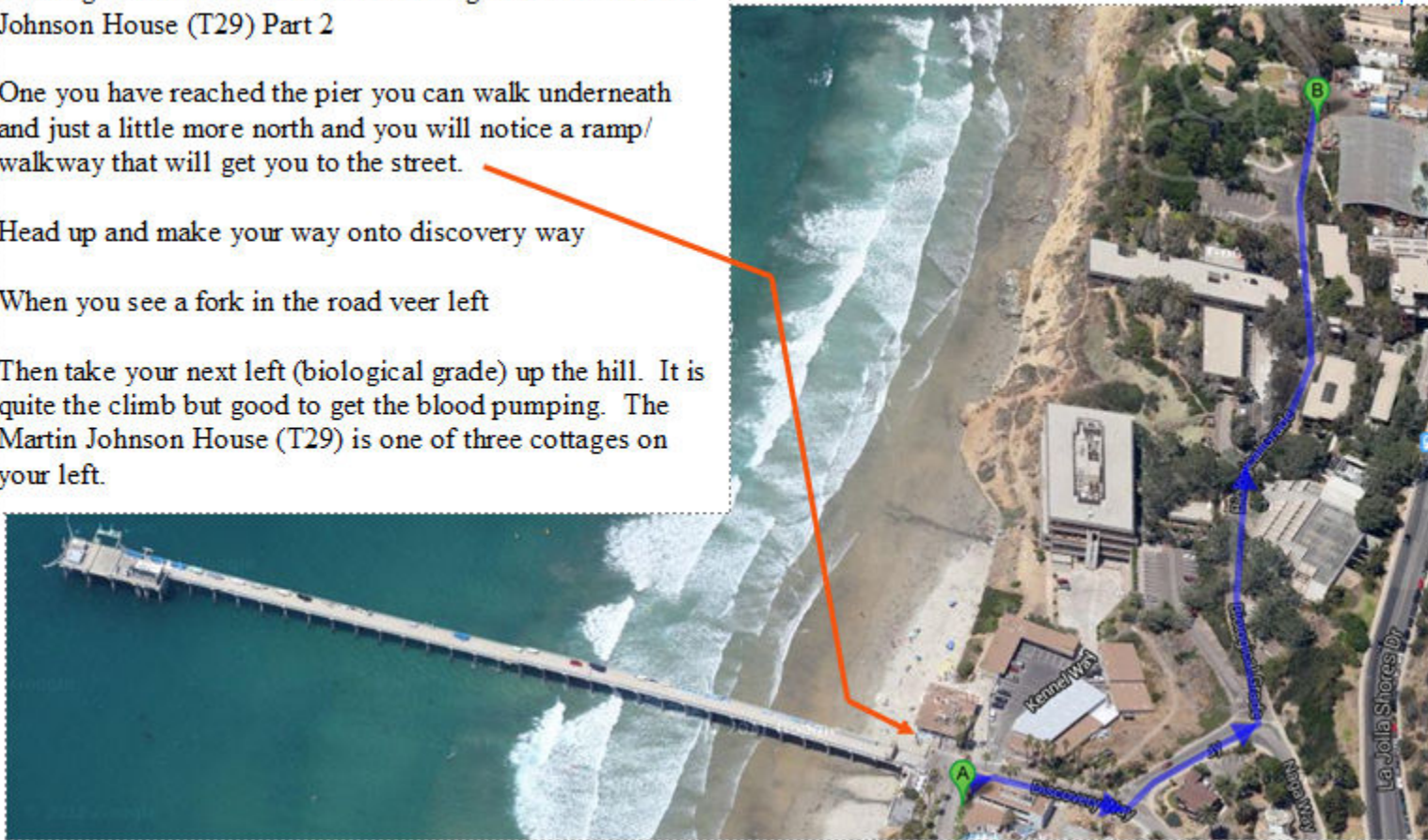
Walking directions from Pier to meeting location - Martin Johnson House (T29) Part 2

Once you have reached the pier you can walk underneath and just a little more north and you will notice a ramp/walkway that will get you to the street.

Head up and make your way onto discovery way

When you see a fork in the road veer left

Then take your next left (biological grade) up the hill. It is quite the climb but good to get the blood pumping. The Martin Johnson House (T29) is one of three cottages on your left.



Scripps Campus Map

NOAA SW Fisheries Science Center.
Day 2 (Nov. 8) mtg location
9 am to 11:45 am

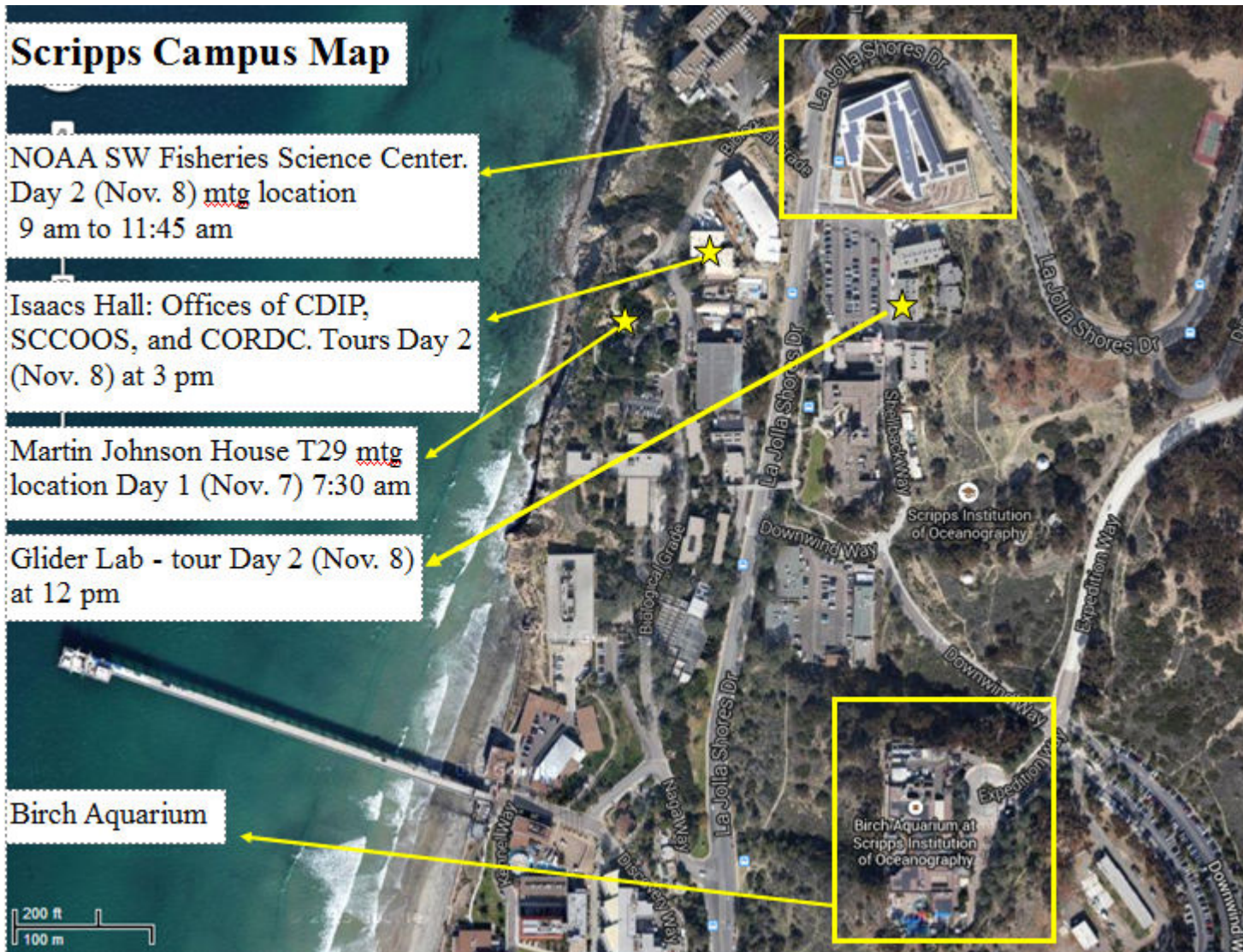
Isaacs Hall: Offices of CDIP,
SCCOOS, and CORDC. Tours Day 2
(Nov. 8) at 3 pm

Martin Johnson House T29 mtg
location Day 1 (Nov. 7) 7:30 am

Glider Lab - tour Day 2 (Nov. 8)
at 12 pm

Birch Aquarium

200 ft
100 m



Things to do in San Diego

All this can be found on the La Jolla Shores Hotel website with links embedded at <http://www.ljshoreshotel.com/Local?ssid=212181>

LA JOLLA ACTIVITIES

Birch Aquarium

Hike Bike Kayak

La Jolla Kayak

La Jolla Playhouse

La Jolla Wine Tours

Menehune Surf

Museum of Contemporary Art

Ocean Girl Surf School

Everyday California

San Diego Bike and Kayak Tours

Surf Diva

Torrey Pines Gliderport

University of California, San Diego

SAN DIEGO ATTRACTIONS

Balboa Park and Museums

(13.4 miles from hotel)

Biplane, Air Combat & Warbird Adventures

(25 miles from hotel)

Downtown San Diego's Gaslamp Quarter

(12.5 miles from hotel)

LEGOLAND California

(25 miles from hotel)

Old Town

(9.5 miles from hotel)

San Diego Zoo

(13 miles from hotel)

SeaWorld

(9 miles from hotel)

Seaport Village

(12.2 miles from hotel)

USS Midway

(12.6 miles from hotel)

San Diego Zoo Safari Park

(31 miles from hotel)